

EVERYTHING AT A GLANCE

WINMAG plus v6.2 Alarm Management System

For installers



Honeywell

NEW: WINMAG PLUS V6.2

Fire and intrusion detection technology, video surveillance, access control and escape route technology – the new version represents a further improvement on the software for integrated Alarm management which has already proved its worth thousands of times over.

- FIRE ALARM TECHNOLOGY
- RESCUE ROUTE TECHNOLOGY
- TIME RECORDING
- VIDEO TECHNOLOGY
- ALARM MANAGEMENT
- ACCESS CONTROL
- INTRUSION DETECTION TECHNOLOGY

MADE-TO-MEASURE ALARM MANAGEMENT

Ideal solution for increasingly complex requirements

As requirements increase, the security installations in buildings have become increasingly high performance, but also increasingly complex. The problem: Control and monitoring of individual, often co-existing systems. WINMAG plus v6.2 offers a comprehensive solution for this issue. This is because WINMAG plus v6.2 can be used to network all the sub-systems together. In addition to offering considerable cost savings, this solution can achieve valuable synergy effects.

Easily scalable and able to handle any task

WINMAG plus v6.2 is modular in structure and easily scalable. Not only can the software be adapted simply and quickly to the size and location of the properties being protected, it also facilitates simple expansion of the installed system whilst offering new functions and a completely

redesigned user interface. Not least, the new license model for the WINMAG plus v6.2 offers bespoke licensing because only the services actually used are licensed, and, in addition, upgrades and conversions can be implemented more cost efficiently.

Global or local, everything is under control

Whether you want to protect an exclusive residence or large real estate, a local or global property network – WINMAG plus v6.2 is the perfect, fully versatile software for networked alarm management on any scale. It is ideal for banks and offices as well as shopping malls, museums and other public buildings with stringent security requirements.

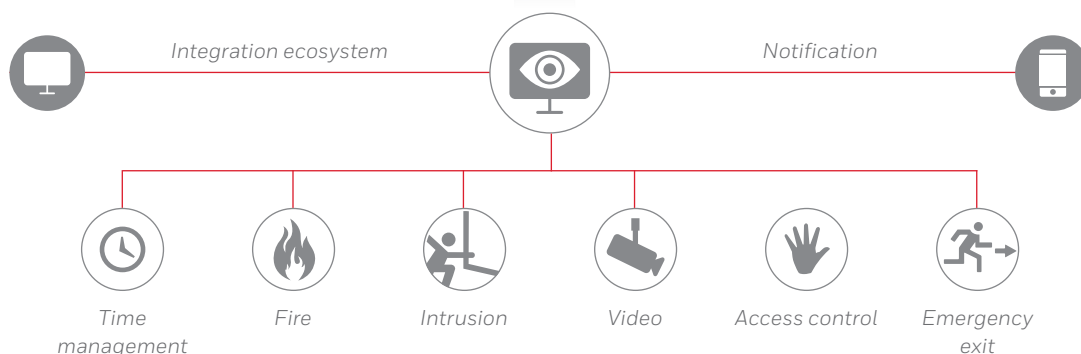
Extremely versatile to use:

- Highly secure private residences
- Sensitive equipment
- Complex industrial premises
- Banks and office buildings



Complete universal control: At a glance

WINMAG plus v6.2 is simple and manageable. Complex security solutions can also be controlled and monitored conveniently and securely from one or more control centres.



EXCEPTIONAL PERFORMANCE FOR EXCEPTIONAL SOLUTIONS

THE NEW BENCHMARK FOR MODERN ALARM MANAGEMENT

WINMAG plus v6.2 offers you more versatility and even greater control of fire and intrusion detection technology, video surveillance, access control and escape route technology. All Alarm management applications are controlled and administered simply

and conveniently via a completely new, standardised user interface. Furthermore, the system offers new functions and integration possibilities. In addition, sequences are even easier to programme in the event of an alarm, and the user interface and icons can be adapted specifically to suit the installation.

OPEN TO EVERYTHING AND ALL SUB-SYSTEMS

Thanks to the open architecture of WINMAG plus v6.2, a variety of security systems can be integrated without any difficulty, both existing systems from Honeywell, as well as those from third-party suppliers.



OVERVIEW OF CENTRAL FUNCTIONS

SOFTWARE ARCHITECTURE

- Distributed enterprise architecture consisting of a controlling station model, a configuration model and a communication model for optimized flexibility
- Modular structure and free programmability
- Hybrid operation permits independent control of individual sites
- High stability due to multiple redundancy
- New pay-as-you-go licensing offers bespoke licensing of the services actually used, as well as ease of upgrading and conversion
- Simple migration from v05 to v6.2
- WINMAG plus SDK supports extensive adaptation

USER INTERFACE/CONTROLS/VIEW

- Visualisation and active control of alarm components in intrusion and fire detection technology, access control and video technology, as well as control systems for escape route technology and emergency exits via a standard user interface
- Integration of voice alarm activation
- Building visualisation in 3D with the support of camera tracking through the building for optimum situational awareness
- Multi-monitor operation: You can select 4 screens from 8
- Detector points are also integrated in the 3D view
- Customised adaptation of the user interface
- Touch screen control is possible
- Parameters can be assigned during runtime
- Message visualisation
- Up to 12 active splits can be viewed at the same time on each monitor
- Integration of video sequences is possible

FUNCTIONS

- Action plan for emergency service personnel
- Definition of sequences in the event of an alarm
- Simple preparation of the customised action plan using the script language SIAS
- Visualisation by cameras enables the situation to be assessed realistically
- New module for notification with delivery via e-mail, SMS and voice messages
- Use of external tools (for instance Word) via user configurable names and icons
- Import of AutoCAD graphics and 3D models
- Integrated simulation functions for validation and test purposes
- Extensive logging of events and control operations

INTEGRATION

- More than 150 interfaces are integrated
- Improved connection of various video systems from (Honeywell and third-party suppliers)
- Integration with visitor administration, video analysis, perimeter and guard control systems
- OPC add-ons Support of the UA protocol enables scalable driver implementation
- BACnet
- Programming with WINMAG SDK
- ESPA 4.4.4 interface available

NEW IN WINMAG PLUS V6.2

- New user interface
- Workflow automation
- New licensing model: Licensing of data points or functions
- More extensive standard support for Honeywell systems as well as for systems from third-party suppliers
- Connection of voice alarm activation
- Optional support for SQL databases

Note: Relevant options may be required for the use of certain features.

A COMPLETE OVERVIEW MANAGED CENTRALLY OR DECENTRALLY

The user interface of WINMAG plus v6.2 is not the only thing to have been designed more user friendly and intuitive. The enterprise architecture supports regional as well as cross-regional and distributed surveillance control centres. Site-specific alarm schedules can be adapted and saved individually; in the event of a Alarm, they can be activated both exclusively locally as well as centrally across all sites.



The alarm window: design according to individual requirements

Each alarm workflow program is executed in a window on the screen, with a separate header and toolbar. The design can be freely defined.



Window system configuration: the right settings are key

This is where you will find the functions for configuring networks, properties, detector points, types, alarm causes and other options.



The multi-view window: up to 12 windows per monitor for an optimum overview

All of the windows are displayed in equal sizes on a monitor; automatic zooming of graphics to window size improves the overview.



The zoom window: with more detailed views for greater insights.

The user can zoom into any area. An overview window shows the location and size of the frame within the complete diagram.



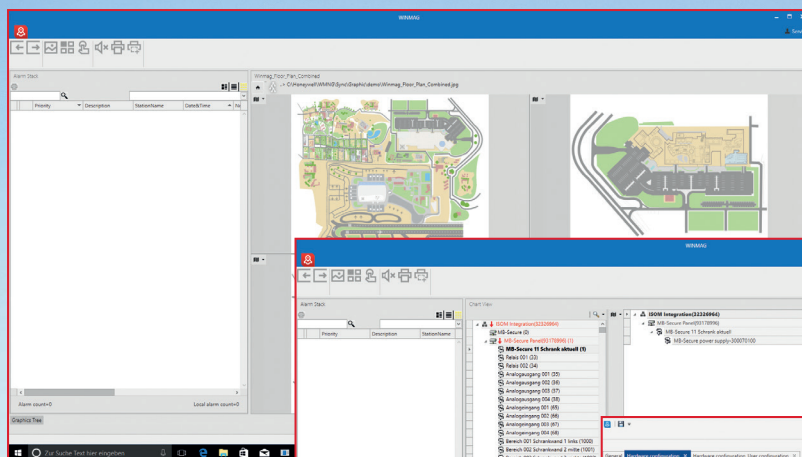
The multi-monitor view: far superior to the conventional standard

WINMAG plus v6.2 can be viewed as a full screen or as a window on the desktop and can run on up to four monitors simultaneously.

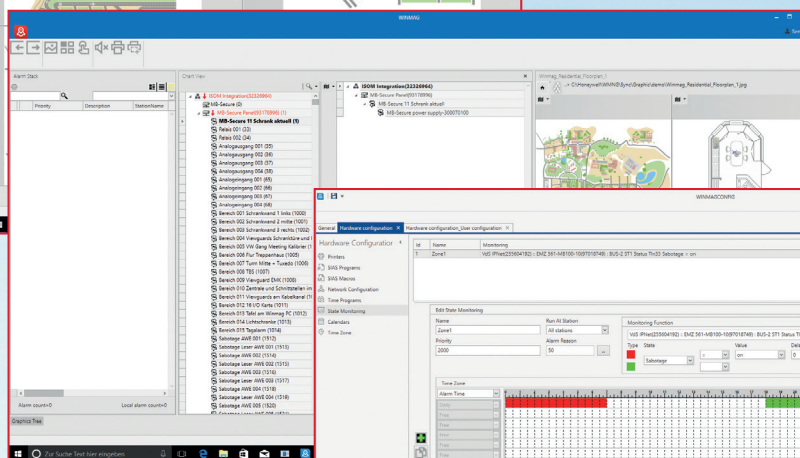


The graphics window: even greater image detail at a glance

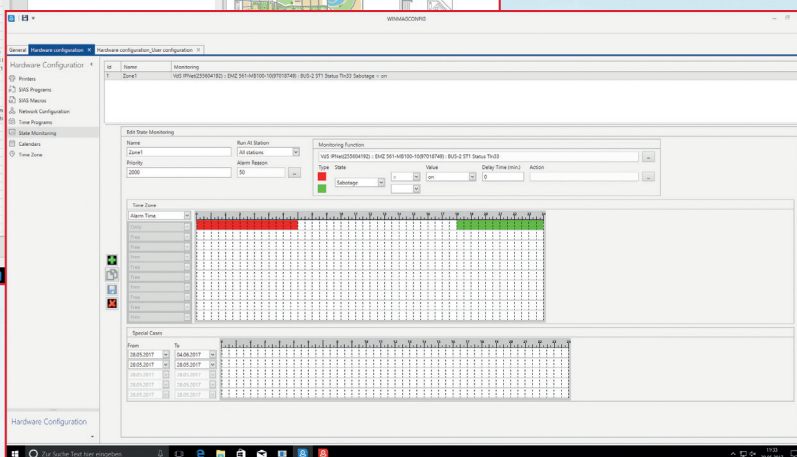
Supports the display of graphics and images, as well as the incorporation of active and dynamic graphics in a basic graphic (graphic-in-graphic).



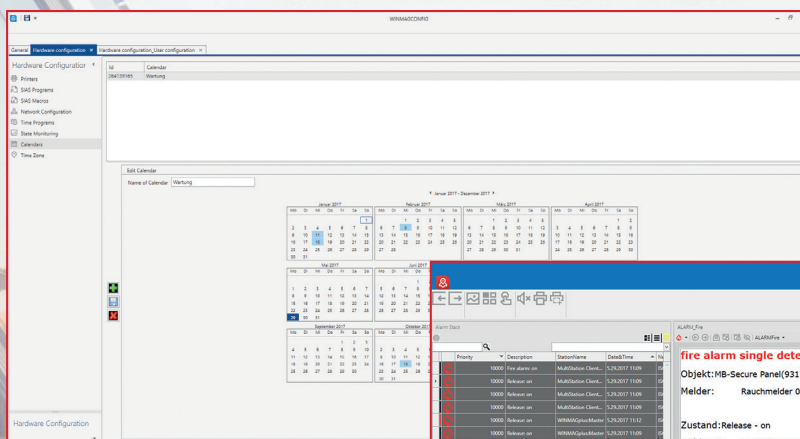
Clear and comprehensive:
the new user interface



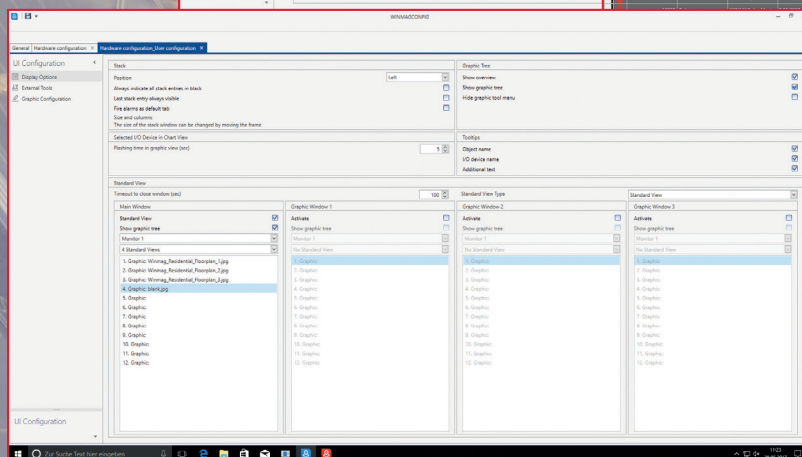
Clear detail: Image tree with
favourite view



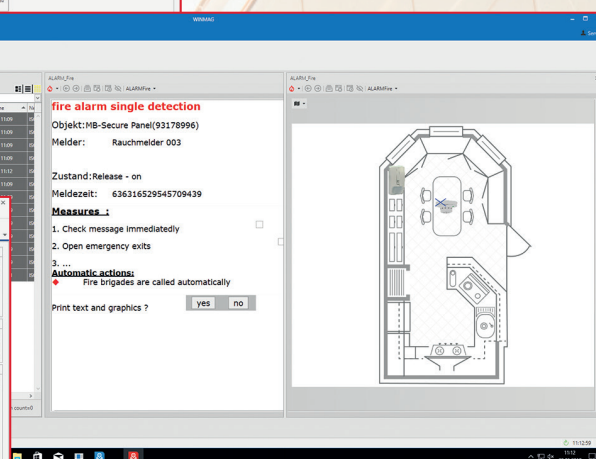
Informed about the hardware configuration status



Clockwork precision:
time zone configuration



Everything under control: hardware configuration



Action plan display with graphics

FUTURE-SAFE ALSO SUPPORTS THIRD-PARTY SYSTEMS

Thanks to the open system architecture, not only can a large number of Honeywell systems be integrated into Alarm management with WINMAG plus v6.2, it also supports existing equipment and devices manufactured by third parties. And should you wish to install further options such as access control or video monitoring later on, WINMAG plus v6.2 is easy to expand. This is also supported by the new licence model because the user only has to license the modules which are actually used.



INTEGRATED FIRE DETECTION TECHNOLOGY

- ESSER (800X, IQ8, FlexES)
- Notifier (ID 3000, NF 300/500, NF 3000/5000)
- GENT (Vigilon, Iconic)
- Optional third-party manufacturers: on request

INTEGRATED VOICE ALARM ACTIVATION

- Honeywell (VARIODYN® D1 Comprio)



INTEGRATED INTRUSION DETECTION TECHNOLOGY

- Honeywell MB Secure, Classic Series
- Optional systems from third-party suppliers: on request



INTEGRATED VIDEO SURVEILLANCE

- Honeywell (MAXPRO VMS, Fusion III / HRPD, VideoBlox, MAXPRO)
- Optional systems from third-party suppliers: on request
- Cameras from third-party suppliers: on request



INTEGRATED ACCESS CONTROL

- Honeywell (IQ Multi Access, MultiAccess, Pro-Watch, WIN-PAK)
- Optional systems from third-party suppliers: on request



INTEGRATED VOICE ALARM

- VARIODYN D1

SIMPLER, QUICKER AND MORE CONVENIENT, GUARANTEED

Thanks to the wide range of interfaces on WINMAG plus v6.2, installers can offer their customers a broad array of performance features for integrated Alarm management. With these, even complex security systems can be installed, monitored and operated quickly, simply and conveniently.

FUNCTIONS	MB SECURE	MB CLASSIC	MAXPRO VMS	FIRE (ESSER, GENT, NOTIFIER)	HONEYWELL VIDEO (HRDP, FUSION)	IQ MULTIACCESS	PROWATCH	OPC DEVICES	BACNET DEVICES*	INTEGRATION OF THIRD- PARTY SUPPLIERS
SCRIPT LANGUAGE SIAS	✓	✓	✓	✓	✓	✓	✓	✓	✓	✓
ADAPTABLE BY INSTALLERS	✓	✓	✓	✓	✓	✓	✓	✓	✓	✓
PHOTO RECOGNITION						✓				
SIGNATURE RECOGNITION						✓				
IMMEDIATE INFORMATION EXCHANGE	✓	✓	✓	✓	✓	✓	✓	✓		
ALARMS AND EVENTS	✓	✓	✓	✓	✓	✓	✓	✓		
ALARM CONFIRMATION			✓							
DEVICE INTEGRATION AND CONTROL	✓	✓	✓	✓	✓	✓	✓	✓		
LIVE VIDEO	✓		✓		✓					
VIDEO RECORDING	✓		✓		✓					
PTZ CONTROL			✓		✓					
DEFAULT			✓		✓					
AUTOMATIC DEVICE IMPORT	✓	✓	✓	✓		✓		✓		
SURVEILLANCE VIDEO WALL			✓							
PARAMETER SETTING	✓	✓	✓	✓	✓	✓	✓	✓		
DEVICE STATUS MONITORING	✓	✓	✓	✓	✓	✓	✓	✓		
SIMPLE INTEGRATION	✓	✓	✓	✓	✓	✓	✓	✓		
DATABASE INTEGRATION							✓			
OPC SERVER									✓	✓
BACNET SERVER									✓	✓

* Supports: Analogue value, binary value, binary input, security device, message distributor

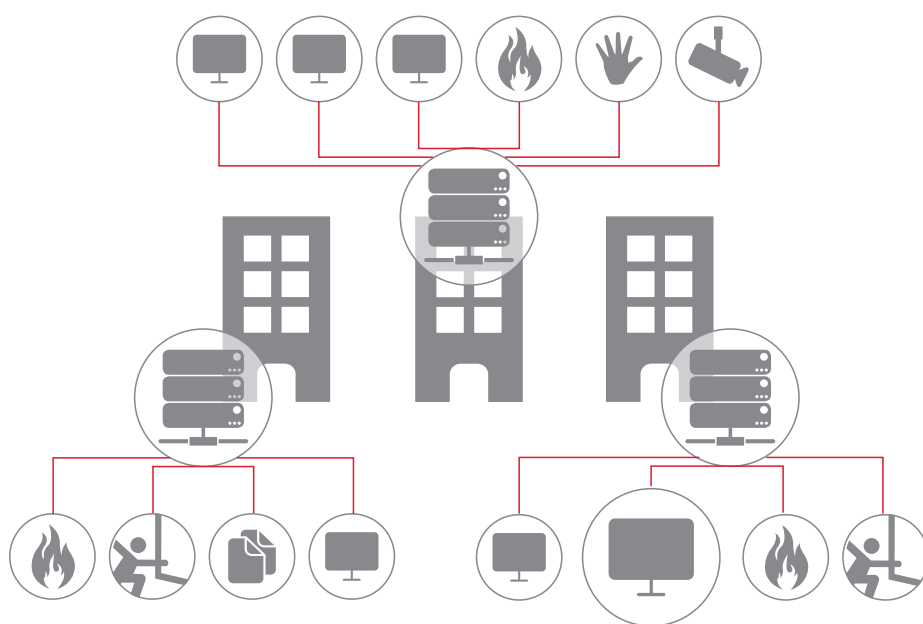
SOFTWARE FULL OF POSSIBILITIES FOR APPLICATIONS OF ANY SIZE

IMPRESSIVE PERFORMANCE FOR SOPHISTICATED SOLUTIONS

THE BRIEF: A multinational company with a number of overseas branches commissioned Honeywell to implement a comprehensive security solution. It required a central controlling station with redundant systems. Existing fire detection technology and equipment manufactured by a variety of companies for video surveillance and access control needs to be integrated.

THE SOLUTION:

- Each branch is linked to the central controlling station via WINMAG plus
- Installation of a redundant WINMAG plus system
- Definition of access rights to data
- Internet-based support for the lead users

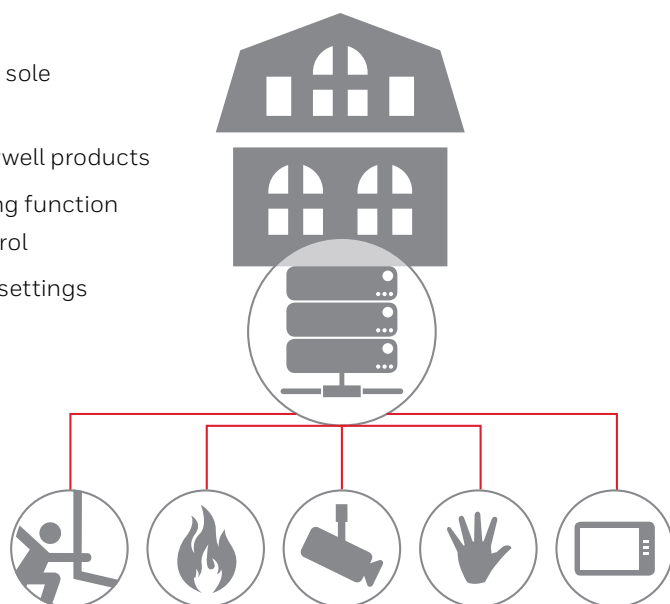


IMPRESSIVE PERFORMANCE FOR SOPHISTICATED SOLUTIONS

THE BRIEF: An integrated security solution was to be developed for a smaller commercial business. Honeywell was to use a number of different sub-system products as part of this: intrusion detection technology, fire detection systems, video surveillance, and an access control system. Furthermore, some basic building functions, such as the lighting and air conditioning system, were to be monitored and controlled using the software.

THE SOLUTION:

- WINMAG plus as the sole monitoring software
- Integration of Honeywell products
- Integration of building function monitoring and control
- Customised system settings



A CLEAR CASE OF PROCESS OPTIMISATION: PRE-ALARM OR ALARM SEQUENCE EXAMPLE

12:03:00

WINMAG plus reports the alarm with corresponding action texts and provides a route map for the fire service.

12:03:15

Alarm escalation can initially be discrete, if desired. To avoid panic, WINMAG plus forwards the alarm to mobile phones, pagers and DECT-enabled devices. This triggers a controlled evacuation.

12:03:25

Only now will the visual and audible alarm be activated either by an emergency warning system, voice-supported alarm activation and/or via the telecommunications system.

12:03:30

For surveillance of the affected areas, the video surveillance system now springs into action. WINMAG plus displays its images. It monitors the development of the fire, for example, helps to mobilise the firemen and monitors footfall along emergency escape routes.

12:03:45

Using the elevator control interface, WINMAG plus provides information about the current operational status and position of all the elevators.

12:04:00

WINMAG plus now visualises information for access control. This means that it is clear at a glance where there are people still present within the building, and which areas have already been completely evacuated.

12:04:20

Integrated intrusion detection and access control provide information about which doors and windows are open and which are closed. WINMAG plus allows effective emergency escape route control to be implemented.

12:05:00

Where there are no access control terminals in place, for instance in a multi-storey car park, payment systems provide important information. They inform WINMAG plus how many visitors entered the building in the period prior to the alarm being triggered.

12:05:30

An interface between the alarm management module and building control system also enables effective louvre blind control via WINMAG plus in the event of an alarm. This is necessary to give the fire service free access to the property from outside.

12:05:40

The building control system also provides fire fighting support. It transmits status data from the smoke extractor and safety installations to WINMAG plus for clear visualisation.

FIRST-CLASS SOLUTIONS FOR TOP BUSINESSES

Whether for large corporate headquarters or local offices around the world, bank branches, office buildings or commercial enterprises, WINMAG plus v6.2 is the perfect security solution for properties of every size and in any location.



DEUTSCHE BAHN AG



GERMANY | BERLIN



WINMAG PLUS

The Deutsche Bahn Group is a leading international mobility and logistics service provider. The group subsidiary DB Services Technische Dienste GmbH delivers VdS and ISO-certified security services both internally within the group and as an external service provider.

- Central fire alarm system
- IQ MultiAccess
- Access control



OHROPAX



GERMANY | WEHRHEIM



WINMAG PLUS

A building control system comprising heat, ventilation, windows, doors and numerous other systems was installed for the new building. All areas and control units are monitored from a 40" monitor at a central location in the production hall.

- Intrusion detection system
- Access control
- Video technology
- 40" display



HYPO TIROL BANK



AUSTRIA | INNSBRUCK



WINMAG PLUS

Hypo Tirol Bank is one of the biggest regional banks in Austria. Perhaps unsurprisingly, the bank faces the two-fold challenge of guaranteeing high standards of security whilst trading flexibly and cost-effectively.

- Intrusion detection system
- Access control
- IQ SystemControl software



AMSTELLAND HOSPITAL



NETHERLANDS | AMSTELVEEN



WINMAG PLUS

Amstelland Hospital offers high-quality medical care in a friendly environment. Following a large new-build project and the extensive renovation of the old building, the hospital in Amstelveen had evolved into an entirely new hospital. In light of this, the security requirements were analysed and the installations upgraded.

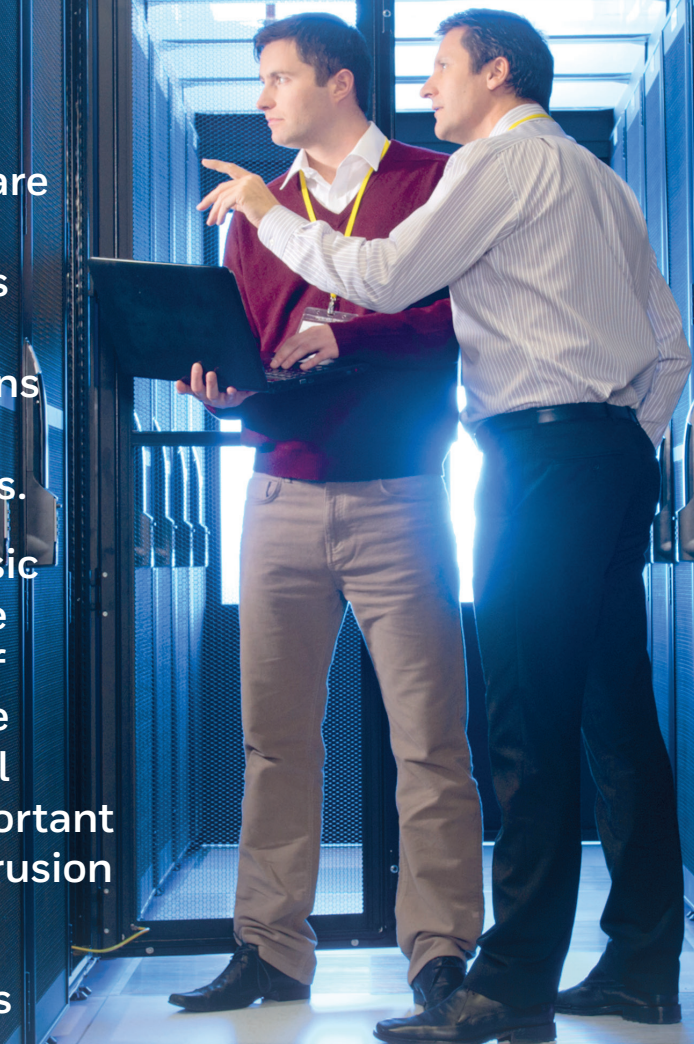
- Video
- HFVMS Fusion Video Management Software

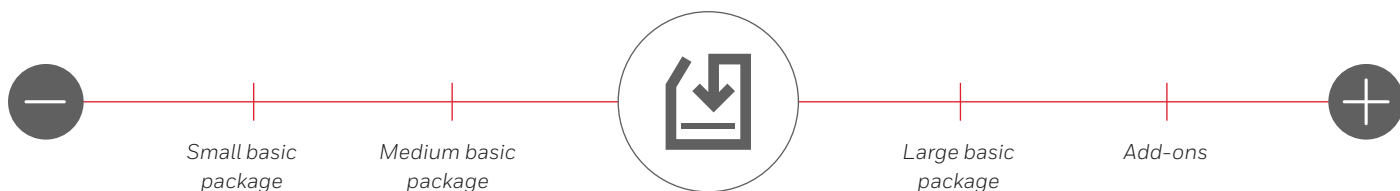
DIFFERENT CONFIGURATION OPTIONS: THE RIGHT PACKAGE FOR EVERY APPLICATION

Of all the benefits, the scalability of WINMAG plus v6.2 is particularly impressive. This means that the software can be adapted precisely to reflect individual requirements. WINMAG plus v6.2 is, therefore, suitable both for very large systems with complex applications as well as smaller properties with less challenging performance requirements.

WINMAG plus v6.2 is available in 4 basic packages, which vary in terms of scope of performance, such as the number of detector points in the system. Even the smallest version can be used to control headquarters and visualise all the important functions of a single fire detection, intrusion detection or access control system.

All the basic packages of WINMAG plus v6.2 have identical data structures, simplifying future upgrades. WINMAG plus v6.2 is therefore also guaranteed to prove a worthwhile long-term investment.





The examples listed show the choice of configurations of WINMAG plus. A licence package typically consists of a basic package, a sub-system option and an add-on.

SMALL BASIC PACKAGE (EXAMPLE)

DATA POINTS	SUB-SYSTEM OPTIONS	ADD-ONS	CLIENTS	OPEN STANDARD INTERFACES
1,000	MB Secure	–	–	–

MEDIUM BASIC PACKAGE (EXAMPLE)

DATA POINTS	SUB-SYSTEM OPTIONS	ADD-ONS	CLIENTS	OPEN STANDARD INTERFACES
10,000	MB Secure	Multi-monitor	5	–
	ESSER			
	Galaxy			

LARGE BASIC PACKAGE (EXAMPLE)

DATA POINTS	SUB-SYSTEM OPTIONS	ADD-ONS	CLIENTS	OPEN STANDARD INTERFACES
50,000	MB Secure	Multi-monitor	25	OPC server
	ESSER	Redundancy		OPC client
	Galaxy	Clients		
	MaxPro VMS	3D integration		
	VARIODYN® D1	Notification		

CONFIGURE YOUR OWN WINMAG PLUS TO YOUR INDIVIDUAL REQUIREMENTS.

BASIC PACKAGES		OPTIONS			
	DATA POINTS	SUB-SYSTEM OPTIONS*	ADD-ONS	CLIENTS	OPEN STANDARD INTERFACES
500	500	MB Secure	Redundancy	1	OPC server
1,000	2,500	Galaxy	Multi-monitor	5	OPC client
2,500	5,000	ESSER	Clients	10	BACnet server
10,000	10,000	Gent	3D integration	25	BACnet client
20,000		Notifier	Notification		
50,000		MaxPro VMS			
		VARIODYN® D1			

* Others, see price list
DVD optional

For More Information

www.security.honeywell.com/me

Honeywell Commercial Security

Emaar Business Park,
Sheikh Zayed Road
Building No. 2, 2nd Floor, 201
Post Office Box 232362
Dubai, United Arab Emirates
Tel: +971 44541704

www.honeywell.com

HIS-WINMAG_plus_62_INS-01-ME(0420)SB-ZB
© 2020 Honeywell International Inc.

**THE
FUTURE
IS
WHAT
WE
MAKE IT**

Honeywell