

582480 (L-VCM24A/EN) 24 W Coaxial Ceiling Loudspeaker EN 54

- ✓ Superior sound reproduction for music and speech
- ✓ Excellent low and high frequency performance
- ✓ Robust metal housing with fire dome
- ✓ Simple power setting
- ✓ EN 54-24 certified



General

The 2-way ceiling loudspeaker provides broad frequency range, low distortion, and high sound pressure level which ensure wide range reproduction of music and voice. The bass response has been extended to give depth and warmth to both music and vocals. The stylish low profile and white color design allows it to blend easily with most applications, such as hotel, shopping mall, conference room and exhibition hall. The ceramic terminal block and thermal fuse increase protection of speaker circuit. It complies with BS 5859 part 8 and EN54 part 24.

Mounting

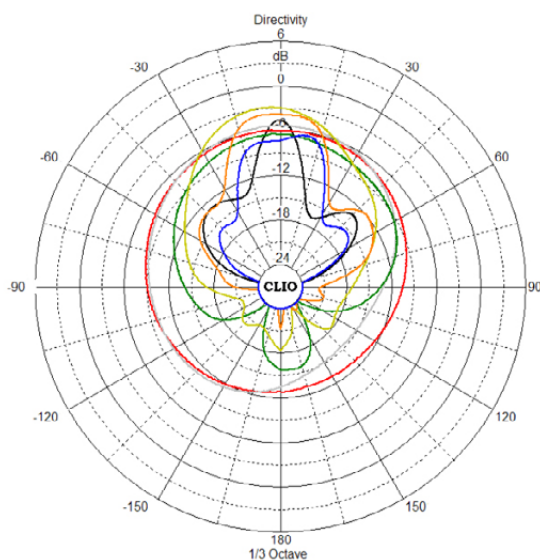
This loudspeaker can be directly installed at ceiling.

Power setting

The loudspeaker is equipped with a ceramic connector for power tapping of 24 W, 12 W, 6 W and 3 W

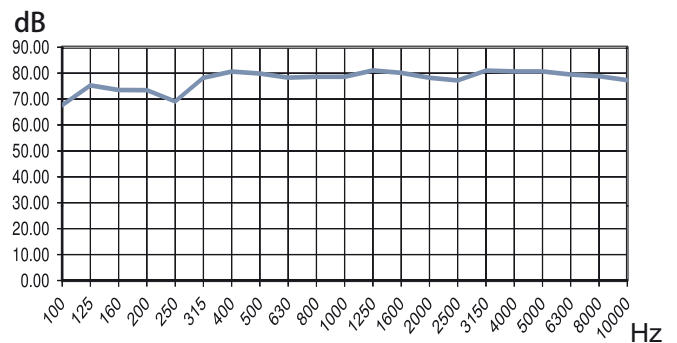
Honeywell

8000Hz
2500Hz
5000Hz
1000Hz
2000Hz
4000Hz
10000Hz

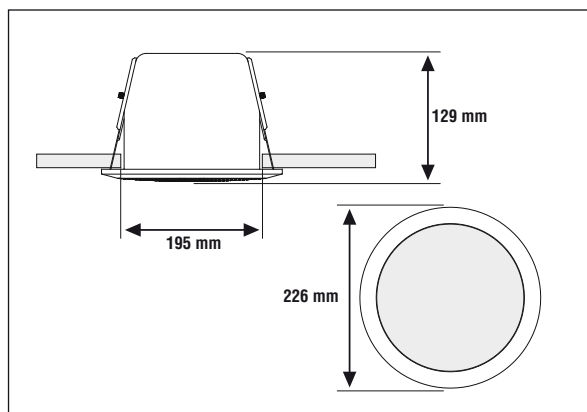


Polar diagram

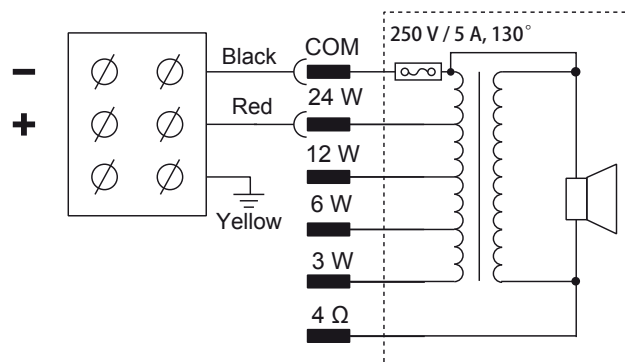
Frequency response at 100 V / 4 m / 1 W, 1/3 oct. smoothing



Frequency response



Dimensions



Circuit diagram

Technical Data

Rated Power	24 W
Transformer power taps	24 / 12 / 6 / 3 W
Rated impedance	0.42 / 0.83 / 1.67 / 3.33 kΩ
Sensitivity EN 54-24, 1 W / 1 m	91 dB
Sensitivity EN 54-24, max 1 m	103 dB
Transmission range	120 ... 20000 Hz
Dispersion angle	165° (H) / 167° (V) @ 1 kHz
Ambient temperature	-25 °C ... 55 °C
Storage temperature	-40 °C ... 70 °C
Air humidity	0 ... 95 % non condensing
Material	Metal
Color	white, similar to RAL 9003
Weight	approx. 2.25 kg
Declaration of Performance	CPR-DoP-2014004

Order information

Part No.

24 W Coaxial Ceiling Loudspeaker EN 54 (L-VCM24A/EN)

582480

Additional order information can be found in the product catalog "VAPA System VARIODYN D1"

* The reference axis is perpendicular to the centre point of the front grille

* The reference plane is perpendicular to the centre of the reference axis

* The horizontal plane is perpendicular to the centre of the reference plane

* The spec/date was measured using a standard baffle mounting in an anechoic chamber as described in EN 54-24